

# Request for Workers for the CVSSC - APRIL 2023 Agility Trial

## We need your HELP for a Successful Trial!

Once again, we are counting on the generosity of agility enthusiasts to pitch in and help keep the trial running smoothly and efficiently. A Worker Sign-Up link will be available closer to the trial.

For those of you who are new to agility, we will train you and offer support as you learn about volunteering for a class.

We will make sure your duties will not interfere with running your runs.

Light snacks and bottled water will be available for volunteers.

Volunteers will be entered in a raffle for a chance to win virtual gift-cards. The volunteer-coordinator will enter everyone who is working; winners will be notified via email.

## Work 1 class and crate in the building!!!



[LevelUpDogSports.com](http://LevelUpDogSports.com)

Entries Open on Tues., Feb. 21, 2023 at 8am EST on a **FIRST RECEIVED** basis at the PO Box address only. All entries received before this date will be returned.

Entries Close on Tuesday, April 4, 2023 at 6pm EST.

**\*Please write CVSSC APRIL on the outside of your envelope\***

All Overnight mail must be sent via **USPS**.

Be sure to check **AND** sign the "**No Signature Required**" waiver or your entry **will not** be accepted. Maximum of 10 entries per envelope.

**\*\*\* Also accepting AKC Online Entries - See inside for more details**

## Central Virginia Shetland Sheepdog Club

Three AKC Licensed All-Breed Agility Trials

Event # 2023461107- 2023461108- 2023461109

This Event is Accepting Entries for Dogs listed in the AKC Canine Partners Program



## April 21 - 23, 2023

**FRI:** EX/MAS STD & EX/MAS JWW,  
Premier STD & Premier JWW, T2B and All Levels of FAST  
**SAT:** All levels of STD & JWW and All Levels of FAST  
**SUN:** All levels of STD, JWW, and T2B

**Judge: Geoff Nieder**

### Level Up Dog Sports

8438 Old Richfood Rd, Mechanicsville, VA 23116

Indoors on Synthetic Turf - One ring 78' x 120'

**Clip 'n Go Rubberized Contacts**

Entries are Limited 330 runs FRI / 350 runs SAT/SUN

**Trial Hours – 7:30am – 7pm FRI 7am to 7pm SAT/SUN**

**Judging Starts no earlier than 8:30am FRI / 8am SAT & SUN**

[www.GoneDogginAgility.com](http://www.GoneDogginAgility.com)



AMERICAN  
KENNEL CLUB®

### American Kennel Club Certification

Permission is granted by the American Kennel Club for the holding of this event under the American Kennel Club Rules and Regulations.

Gina DiNardo, Executive Secretary

## Central Virginia Shetland Sheepdog Club Officers & Board of Directors

Paisley Bowles, *President*..... 8928 Cherokee Rd, Richmond, VA 23235  
Terry Jennings, *Vice President*..... 13360 Old Ridge Rd., Beaverdam, VA23015  
Gabrielle Hughes, *Corresponding Secretary*.... 10558 Farm Meadows Dr., Glen Allen, VA 23060  
Patricia Harris, *Treasurer* .....29463 Signboard Rd., Doswell, VA 23047  
Members at Large: ..... Greg Speeks & Alyssa Fenton

Ashley Castro, *Trial Chairman*  
8438 Old Richfood Rd.  
Mechanicsville, VA 23116  
(804) 405-7025  
[ashleyacastro@gmail.com](mailto:ashleyacastro@gmail.com)

Jenn Galgano, *Trial Secretary*  
PO Box 3070  
Virginia Beach, VA 23454  
(757) 481 - 4854  
[GoneDoggin@cox.net](mailto:GoneDoggin@cox.net)  
[www.GoneDogginAgility.com](http://www.GoneDogginAgility.com)

### EVENT COMMITTEE

Ashley Castro	Merritt Speagle	Maddie Speagle
Axel Taura	Jenn Galgano	Sarah Crane
Laurene Galgano	Carol Boggess	Courtney Iannello

### ENTRY FEES

**\$22 per run**

(Fees include AKC recording fee of \$3.50 for 1<sup>st</sup> entry and \$3 for additional entries per run/per dog/per day)

\*\*\* MAKE checks payable to: **LUDS** \*\*\*

### YOU CAN NOW ENTER VIA AKC'S ONLINE ENTRY SERVICES

Go to the AKC Agility Online Entry Services home page at [www.akc.org/AgilityEntry](http://www.akc.org/AgilityEntry) and follow the instructions there to use your My AKC account to enter this event online. During the first 48 hours after opening, the initial limit of entries designated as either online or paper will be as follows: SAT/SUN 87 Online & 263 paper / FRI: 83 online & 247 paper. If either form of entry has not filled at the end of the 48-hour time period, the club reserves the right to decrease or increase either one accordingly.

### Judge - All Classes/All Days

**Geoff Nieder** # 100691 .....Imperial, MO

### Wait List for Withdrawn Entries after Closing

CVSSC is offering a Wait List to fill openings created by withdrawn entries after the trial's closing on April 4, 2023. A maximum of 20 entries will be placed on the wait list. All entries, including waitlisted entries, must be received by the Trial Secretary prior to the trial closing date. Any entries withdrawn that are received by Sunday, April 16, 2023 @ 6pm, will be replaced by a wait listed entry if any are available. If a withdrawn entry is replaced by a waitlisted entry, a full refund will be issued for the withdrawn entry. Any waitlisted entry that does not move off the waitlist into the trial by Sunday, April 16, 2023 @ 6pm will receive a full refund.

No entries will be added to the waitlist without both the entry fees.

**If you have not heard about your Wait List status by Tues., Apr. 18, contact us ASAP!**

We answer all correspondence and acknowledge receipt of all move-ups and corrections to entries. We usually respond within 2 days unless we are at a trial. Please contact us if you do not hear back in a reasonable timeframe.

**IF YOU DO NOT HEAR BACK, WE DID NOT GET YOUR EMAIL OR ENTRY!**

### ENTRY INFORMATION

- Checks or money orders ONLY \*NO CASH \* payable to "LUDS" and mail to Trial Secretary at the PO Box address ONLY. \*Please write CVSSC APRIL on the outside of your envelope\*
- Coupons from the JANUARY CVSSC trial cannot be used at these trials.
- All entries must be submitted on official AKC agility entry forms, one dog per entry form. Photocopies of front & back will be accepted only if legible and official AKC size.
- Entries will not be accepted without signature, back of entry form with agreement, and fees, nor will email, telephone or FAX entries be accepted. Overpayments of under \$10 will not be refunded.
- Owners are responsible for ensuring that entry forms are completed IN FULL. Entries submitted without ALL information will be returned as invalid. \*\*\*PLEASE WRITE EMAIL ADDRESS LEGIBLY!!!
- Returned checks do not constitute a valid entry. A \$30.00 service fee will be added for all returned checks.
- Overnight service MUST be mailed through USPS and you MUST check AND sign the "NO SIGNATURE REQUIRED" waiver box, as the Trial Secretary will not be present to sign for your entries.
- Limit 10 entries per envelope.
- THIS CLUB DOES NOT AGREE TO ARBITRATE CLAIMS AS SET FORTH ON THE OFFICIAL AKC ENTRY FORM FOR THIS EVENT.

### INVALID ENTRIES

Invalid entries will be returned to the address on the entry form. The following constitute an invalid entry:

- An entry which is missing any AKC required information
- Entries not on Official AKC forms OR on a photocopy of an AKC form without the current agreement and rule on the reverse side or attached to the entry form
- Entries which are illegible or incomplete or received with insufficient fees.
- Conditional, unsigned, incomplete, e-mail, telephone, FAX, or telegraph entries cannot be accepted.
- Returned checks do not constitute a valid entry
- A maximum of ten entries per envelope is allowed. Envelopes with more than the ten dog maximum shall be treated as an invalid entry and shall be returned to the sender.

## PLEASE CHECK YOUR ENTRIES CAREFULLY!

### CONFIRMATIONS

- Confirmations will be sent via US mail ONLY if an exhibitor does not have an active e-mail address or upon specific request.
- A Preliminary Confirmation will be sent to the e-mail address on the AKC entry form after your entry has been processed. Please review the information in the confirmation for input errors and notify the Trial Secretary of any corrections.
- Final confirmations of entry and judging schedule will be sent to the e-mail address on the AKC form after the closing date.

**NOTE: If you have not received the Final confirmation within five days of the trial, please contact the Trial Secretary.**

## *Class Changes Effective January 1, 2020*

### **Entering a Mixture of Regular and Preferred Classes Within the Same Trial Weekend – Multiple Jump Heights Within the Same Trial Day**

Effective January 1, 2020, exhibitors may enter a mixture of both Regular and Preferred classes on the same trial day and/or during a trial weekend. Any mixture of Regular and Preferred classes is allowed.

Please note that if a dog qualifies in Regular Master Standard and Preferred Master JWW (or vice versa) on the same trial day, then NO Double Q shall be earned toward either the MACH or PACH title. The Double Q still requires that Standard Agility and Jumpers With Weaves be either both Regular OR both Preferred on the same trial day.

Additionally, within the same Regular or Preferred classes, a dog may now be entered in multiple jump heights within the same trial day. For example, the same dog may now be entered in 20-inch Master STD/JWW while also entered in 24C-inch Premier STD/JWW on the same trial day.

A **separate entry form** must be submitted when the same dog is being entered in a mixture of Regular and Preferred and/or different jump heights within the same trial weekend thereby clearly indicating which class(es) and/or jump heights belong together for each trial day of the weekend.

### **Fix and Go On (FNG)**

Fix and Go On allows exhibitors to immediately reattempt an obstacle at any time while on course when the dog's performance of an obstacle is not to their expectation. This allows the dog to successfully complete the obstacle then finish the course or leave the ring on a positive note. Using Fix and Go On will result in a non-qualifying score. Fix and Go On is not pre-entered; rather, it occurs during the run.

## **Entering For Exhibition Only (FEO)**

### **CVSSC is offering classes FEO in all T2B and FAST classes**

- FEO allows exhibitors to work with their dogs in a trial environment. FEO is only offered in the Time 2 Beat and FAST classes. Participation in FEO is non-qualifying.
- FEO runs are treated as trial entries. The exhibitor must enter the class(es) (T2B and/or FAST) prior to the closing date, pay class entry fee(s) and the Trial Secretary must record the entry in the Trial Catalog as part of the results for that class. FEO does not need to be noted on the entry form; the handler will declare the day of the show.
- Dogs may be entered in any jump height for FEO runs. If entered in an ineligible jump height, the team is committed to FEO for that run and must declare FEO on the start line. Day of show jump height changes are not allowed.
- Dogs may be entered in any level of FAST (Novice, Open, Excellent, Master). If the dog is not eligible for the level entered, the team is committed to FEO for that run and must declare FEO on the start line. Day of show level changes are not allowed.
- The exhibitor must declare FEO in the ring prior to leading out. FEO may be declared earlier (ex. when checking in at the gate board).
- Toys are allowed in the ring. Toys must be non-audible and may not leave the handlers hand. Toys that roll freely may not be used.
- Food/treats are not allowed in the ring
- FEO should be utilized for the benefit of the dog and not as a punitive correction. Harsh verbal and /or physical corrections shall not be tolerated. Any determination of harshness by the judge shall be immediately whistled and the handler will be dismissed from the ring.
- A judge must monitor the entire run. Judges can stop a run at any time

## **CLASSES OFFERED**

FRI: Ex/Mas STD, Ex/Mas JWW, All levels of FAST, T2B plus Premier STD and Premier JWW

SAT: All levels of STD, JWW, and FAST

SUN: All levels of STD, JWW plus T2B

Please consult AKC rules and regulations pertaining to Agility Trials for complete description and eligibility for entry in these classes. The exhibitor is fully responsible for entering the dog in the correct class/division.

## **RUNNING ORDER**

**FRI & SUN**                      **HIGH to LOW**    (24/24C, 20, 16, 12, 8, 4)  
**SAT**                                **LOW to HIGH**    (4, 8, 12, 16, 20, 24/24C)

### **FRIDAY**

Ex/Mas FAST – Open/NOV FAST – Prem STD – Ex/MAS STD –  
T2B – Premier JWW – Ex/MAS JWW

### **SATURDAY**

Ex/Mas JWW – Ex/Mas STD – EX/MAS FAST -  
Open & Novice FAST - Open STD - Nov STD - Open JWW – NOV JWW

### **SUNDAY**

Ex/Mas JWW – Ex/Mas STD - T2B -  
Open STD - Nov STD - Open JWW – NOV JWW

## **HEIGHT DIVISIONS**

Owners/Agents are responsible for entering the proper height divisions.

<b>REGULAR</b>	<b>PREFERRED</b>	<b>INFORMATION</b>
Exhibitors may chose to enter their dog in a higher height division than required by AKC, but not in a lower height division than the AKC mandated height.	The following jump heights shall be used in all Preferred classes.	Owners are responsible for entering their dog in the proper height division  For dogs measuring ...
8"	4"	For dogs 11 inches & under at the withers
12"	8"	For dogs 14 inches & under at the withers
16"	12"	For dogs 18 inches & under at the withers
20"	16"	For dogs 22 inches & under at the withers
24"	20"	For dogs over 22 inches at the withers
24C"	---	Dogs who measure into the 24-inch regular jump height division are not eligible to enter 24-Choice.

**NOTE:** Handlers whose dogs measure into the 8" through 20" regular jump height division may optionally enter in 24-Choice (24C) jump height at their discretion.

### Simplified Jump Height Card Process

If your dog needs to be measured, check the box at the top of the entry form so that your dog is placed on the Measuring List. ***It is no longer required that you submit a copy of your dog's jump height card with your entry form or show it during day of show check-in.***

**It is the exhibitor's responsibility to have their dog measured prior to running.  
Failure to do so will result in the cancellation of any qualifying scores.**

## **OBSTACLES**

All obstacles and equipment used at this trial meet the requirements for AKC agility trials.

All exhibitors should obtain a copy of the Regulations for Agility Trials by downloading them from the American Kennel Club website at <http://www.akc.org/rules/>.

## **DOGS ELIGIBLE TO ENTER**

This trial is open to all dogs fifteen (15) months of age or older that are registered with the American Kennel Club or that have AKC Limited Registration, Purebred Alternative Listing/Indefinite Listing Privileges (PAL/ILP), an AKC Canine Partners listing number, or approved Foundation Stock Service (FSS) breeds are eligible to participate.

Dogs with a Purebred Alternative Listing/Indefinite Listing Privileges (PAL/ILP) or an AKC Canine Partners listing number must be spayed or neutered in order to compete. Wherever the word "dog" is used in these regulations it includes both sexes.

Dogs should be physically sound. Dogs that are blind shall not be eligible, and neither are bitches in season, aggressive dogs, or dogs suffering from any deformity, injury, or illness which may affect the dog's physical or mental performance. No dog shall compete if it is taped or bandaged in any way or has anything attached to it for medical purposes. Refer to Chapter 2 of the Registration and Discipline Rules for the listing of registerable breeds that may participate.

## **NOTICE TO EXHIBITORS**

The safety of the dogs is our primary concern. By entering this trial, exhibitors acknowledge that they are familiar with the rules and regulations of this sport, and that their dogs are familiar with and able to perform all obstacles safely. It is expressly understood that the exhibitors alone are responsible for the behavior of their dogs and/or children. Any exhibitor whose dogs and/or children create unnecessary disturbances or repeatedly engage in unsafe or disruptive behavior may, at the discretion of the Event Committee, be asked to leave the show site. In such case, no refund of any entry fees will be made. Entry fees will not be refunded in the event that the dog is absent, disqualified, excused, or barred from competition by action of the Event Committee. No entry fee will be refunded if the trial cannot open or be completed by reason of civil disturbances, fire, an act of God, public emergency, act of a public enemy, or any other cause beyond the control of the organizing committee. Exhibitors are responsible for being at the ring gate when it is their turn to run. No classes will be held up by a late exhibitor. Umbrellas are not allowed on the course during walkthroughs. All dogs must be on leash at all times except when in the ring or when in the designated agility warm-up area. No dogs may be left tied to trees, cars, fences, etc. Dogs under 4 months of age are not allowed at this trial.

## **RIBBONS AND AWARDS**

Flat placement ribbons will be awarded to the first through fourth place dog in each jump height division in each class. Flat Qualifying ribbons will be awarded to all dogs receiving a qualifying score. MACH/PACH Rosettes and a MACH/PACH bar will be given to exhibitors earning a MACH or PACH title at this trial. All ribbons and prizes must be claimed the day of the Trial; none will be mailed. New Title rosettes ribbons will be given to each dog earning a new title (excludes Metallic titles). Double Q flat ribbons will be available for dogs qualifying in both Master STD & Master JWW, regular or preferred, on the same day\*\*

## **MOVE UPS**

Move ups must be sent in writing (E-mail is acceptable and preferred) to the Trial Secretary for the April 21th trial no later than Monday, April 17th at 6pm.

**Day to Day Move ups will be accepted but must be submitted in person to the trial secretary no later than 15 minutes after the last run is judged for each class (STD, JWW, FAST).**

## SITE INFORMATION

- Please read the April CVSSC Trial Instructions and Guidelines. If you do not feel you can comply with these requirements, we look forward to seeing you at a future event.
- **Crating:** Priority will be given to club members and volunteers. If there is additional space it will first come, first served. Crating is only allowed on the tarps set down by LUDS – this is to preserve the new flooring. Please conserve space. **Trial committee reserves the right to rearrange set-ups** in order to fit more dogs in the building. Do not block aisles
- MACH/PACH cakes allowed.
- Do not park in front of any gate or doorway.
- Respect the traffic cones when parking – they are marking the turning radius for truck traffic
- **Do not potty your dogs on the neighboring tenants' lawns. If you are caught, you will be asked to leave for the weekend and forfeit your runs.**
- The show site is climate controlled indoors on turf flooring. There is a warm up area for all exhibitors.
- All turf accidents must be reported immediately and \$5 clean up fee paid.
- Dogs must be kept on leash when not in the ring.

## REFUNDS

**Bitches in season will not be admitted to the trial.** Any exhibitor with an entered bitch in season, on the trial date, will be given a cash refund, less \$3 per run (per day), upon receipt of a written and dated certification from a veterinarian. Notification must be in the hands of the trial secretary no later than 30 minutes before the start time on the date of the trial.

**Injury/Illness** – Dogs that cannot compete prior to the set of trials due to an injury/illness will be given a partial refund in the form of a voucher towards a future trial, less \$10 per run (per day).

**A written vet letter (on office letterhead) must be given to the Trial Secretary no later than 30 minutes before the start time on Friday, April 21, 2023.**

Validation of the injury/illness must be made by a licensed veterinarian and attest that the dog cannot compete at this specific set of trials and/or provide a time period during which the dog cannot compete. Requests from chiropractors, massage/physical therapists, etc will not be accepted. All injury partial refunds subject to verification. Handler illness/injury is excluded from this policy.

## VETERINARIAN ON CALL

**Dogwood Veterinary Emergency**, 804-716-4700, 24 hour emergency service  
5918 W. Broad Street, Richmond, VA 23230

**Veterinary Emergency & Specialty Center**, 804-353-9000,  
3312 West Cary Street, Richmond, VA 23221

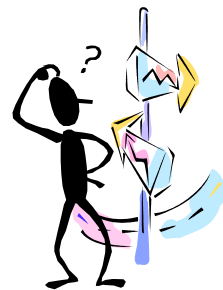
## RV PARKING

**No Overnight RVs or Day RV Parking on site**

## DIRECTIONS TO THE SITE

**Level Up** 8438 Old Richfood Rd, Mechanicsville, VA 23116

**Note:** If you are using GPS navigation, make sure to use the address above.



### **From I-95 South**

- Take Exit 84A to merge onto I-295S
- Take Exit 41B to merge onto US-301S/VA-2 S/Chamberlayne Rd.
- \*\*\*Follow Directions Below

### **From I-95 North**

- Take Exit 82 for US-301 N/VA-2 N.
- Turn LEFT onto US-301 N/VA-2 N/Chamberlayne Rd.
- Turn RIGHT onto Richfood Rd.
- Turn LEFT onto Old Richfood Rd

### **From I-64E East**

- Take Exit 177 for I-295
- Take Exit 41B to merge onto US-301S/VA-2 S/Chamberlayne Rd
- \*\*\*Follow Directions Below

### **From I-64E West**

- Take Exit 200 for I-295
- Take Exit 41B to merge onto US-301S/VA-2 S/Chamberlayne Rd
- \*\*\*Follow Directions Below

\*\*\*\* Turn LEFT at the 1<sup>st</sup> light onto Richfood Rd. At mulch piles, turn LEFT onto Old Richfood Rd. Building will be on the RIGHT. Look for the Level Up Dog Sports sign.

## HOTELS

**Please check the hotel's pet policy when making your reservations**

**Candlewood Suites**, 804-262-2240

4120 Tom Leonard Drive Glen Allen, Virginia 23060

**10% off & Reduced Pet Fee with booking link:**

[LUDS Corporate Rate Candlewood @Short Pump](#)

**Hampton Inn –Richmond-Mechanicsville**, 804-559-0559

7433 Bell Creek Rd., Mechanicsville, VA 23111

**Candlewood Suites**, 804-262-2240 (9 minutes from Level Up)

10609 Telegraph Rd., Glen Allen, VA 23059

**LaQuinta Inn& Suites**, 804-876-6900 (18 minutes from Level Up)

16280 International Street, Doswell, VA 23047

Free breakfast and high speed internet

**Springhill Suites**, 804-266-9403 9701 Brook Rd., Glen Allen, VA 23059

**Tru by Hilton**, 804-365-5830 101 North Carter Rd., Ashland, VA 23005

- Do not park in front of any gate or doorway.
- Respect the traffic cones when parking – they are marking the turning radius for truck traffic.
- Our neighbors may use cones to block more areas than indicated on this map – please respect them!
- Do not park in the Southern Air lot (directly across Barricade Ln from LUDS) on FRIDAY. We are allowed to park there only on SAT/SUN.



## CVSSC/LUDS April 2023 Trial Guidelines

CVSSC (Central VA Shetland Sheepdog Club) & LUDS (Level Up Dog Sports) has put in place the following procedures for our agility trial at LUDS for the safety of our exhibitors and adherence to State and CDC requirements and guidelines.

**Masks are suggested but not required.**

Rules and guidelines are subject to change and we will keep you updated with any changes that occur prior to the trial.

We will be using the Agility Gate app for an electronic gate. There will be no paper course map copies. Maps will be posted on our judge's website and the Agility Gate app the day of the trial. We will also have a posting copy on the wall for those exhibitors wishing to take pictures of the course maps. **REMEMBER:** Agility Gate is only an electronic aide.

**Exhibitors are still responsible for arriving on time for their walk-thrus and runs.**

See Site Information for information on crating in the building. If you plan on running your vehicle, please park so your exhaust does not go into another vehicle.

One way entry/exit as follows: Enter the building on the parking lot side and exit on the other side where the street goes between the buildings.

Walks will continue to be smaller than the suggested AKC size of 60 handlers per walk group. We will be lining up the next five dog & handler teams to run. Please respect each team's space in the queue. Exhibitors are responsible for arriving on time for their walk-thrus and runs.

**AGREEMENT**

I certify that I am the actual owner of the dog, or that I am the duly authorized agent of the actual owner whose name I have entered. In consideration of the acceptance of this entry, I (we) agree to abide by the rules and regulations of The American Kennel Club in effect at the time of this event, and any additional rules and regulations appearing in the premium list of this event and entry form and any decision made in accord with them. I (we) agree that the club holding this event has the right to refuse this entry for cause which the club shall deem sufficient. I (we) certify and represent that the dog entered is not a hazard to persons or other dogs. In consideration of the acceptance of this entry and of the holding of this event and of the opportunity to have the dog judged and to win prizes, ribbons, or trophies, I (we) agree to hold the AKC, the event-giving club, their members, directors, governors, officers, agents, superintendents or event secretary and the owner and/or lessor of the premises and any provider of services that are necessary to hold this event and any employees or volunteers of the aforementioned parties, and any AKC approved judge, judging at this event, harmless from any claim for loss or injury which may be alleged to have been caused directly or indirectly to any person or thing by the act of this dog while in or about the event premises or grounds or near any entrance thereto, and I (we) personally assume all responsibility and liability for any such claim; and I (we) further agree to hold the aforementioned parties harmless from any claim for loss, injury or damage to this dog. Additionally, I (we) hereby assume the sole responsibility for and agree to indemnify, defend and save the aforementioned parties harmless from any and all loss and expense (including legal fees) by reason of the liability imposed by law upon any of the aforementioned parties for damage because of bodily injuries, including death at any time resulting therefrom, sustained by any person or persons, including myself (ourselves), or on account of damage to property, arising out of or in consequence of my (our) participation in this event, however such, injuries, death or property damage may be caused, and whether or not the same may have been caused or may be alleged to have been caused by the negligence of the aforementioned parties or any of their employees, agents, or any other person. I (we) agree that the determination of whether the injury is serious shall be made by the event veterinarian and is binding on me (us).

**I (WE) AGREE THAT ANY CAUSE OF ACTION, CONTROVERSY OR CLAIM ARISING OUT OF OR RELATED TO THE ENTRY, EXHIBITION OR ATTENDANCE AT THE EVENT BETWEEN THE AKC AND THE EVENT-GIVING CLUB (UNLESS OTHERWISE STATED IN THIS PREMIUM LIST) AND MYSELF (OURSELVES) OR AS TO THE CONSTRUCTION, INTERPRETATION AND EFFECT OF THIS AGREEMENT SHALL BE SETTLED BY ARBITRATION PURSUANT TO THE APPLICABLE RULES OF THE AMERICAN ARBITRATION ASSOCIATION. HOWEVER, PRIOR TO ARBITRATION ALL APPLICABLE AKC BYLAWS, RULES, REGULATIONS AND PROCEDURES MUST FIRST BE FOLLOWED AS SET FORTH IN THE AKC CHARTER AND BYLAWS, RULES, REGULATIONS, PUBLISHED POLICIES AND GUIDELINES.**

**INSTRUCTIONS**

Handlers whose dogs measure into the 8" through 20" regular jump height divisions may opt to enter in a higher or 24-choice height division for all Regular titling classes, but not in a division lower than their proper height division. Dogs who measure into the 24" regular jump height division may not enter 24-choice. Dogs entered in the Preferred classes must compete at the required jump height and may not compete in a jump height division higher or lower than their proper height division.

All dogs that have not been officially measured for an **Agility Jump Height Card** may still compete; however, they must be measured by a Judge of record, an Agility Field Representative, or a Volunteer Measuring Official, prior to running. If measured by the Judge of record, that measurement will be valid for this trial *or back-to-back trials* only. If a measurement is necessary, it is the exhibitor's responsibility to have their dog(s) measured prior to running.

Dogs listed in the **AKC Canine Partners**™ program may be eligible to enter all-breed AKC agility trials at the club's option. These dogs should be listed as All American Dog and must include their AKC number on the entry form and check the AKC No. box.

**Junior Handlers** should enter their Junior Handler number on the front of this form. Should you not have your Junior Handler number, it may be obtained from the American Kennel Club (919) 233-9767. If the Junior Handler is not the owner of the dog identified on the face of this form, what is the relationship of the Junior Handler to the Owner? \_\_\_\_\_

Emergency Contact: **NAME:** \_\_\_\_\_ **PHONE #:** \_\_\_\_\_

**BY SIGNING YOUR ENTRY FORM, YOU CONFIRM THAT YOU WILL ABIDE BY THE SITE RULES LISTED IN THE PREMIUM**

**SIGNATURE** OF OWNER OR HIS AGENT  
DULY AUTHORIZED TO MAKE THIS ENTRY \_\_\_\_\_

**TELEPHONE:** \_\_\_\_\_

**E-MAIL ADDRESS:** \_\_\_\_\_  *New Email*

OFFICIAL ENTRY FORM FOR AGILITY TRIALS

**CVSSC - APRIL Trials**

Three All-Breed Licensed Agility Trials  
Level Up, 8438 Old Richfood Rd, Mechanicsville, VA 23116



This is a separate Mixed Height Entry

**Entry Fees: \$22 per run**  
(includes AKC recording fees).

**Checks payable to:**  
**LUDS**

Day	Date	STD	JWW	FAST	T2B	PREMIER	
						STD	JWW
<b>FRI</b>	4-21-23	EX/MAS	EX/MAS				
<b>SAT</b>	4-22-23				N/A	N/A	N/A
<b>SUN</b>	4-23-23			N/A		N/A	N/A

Opens: Tues., 2-21-23 at 8am EST Closes: Tues., 4-4-23 at 6pm EST Limit 10 entries per envelope

Mail to: Jenn Galgano, CVSSC APRIL, PO Box 3070, Virginia Beach, VA 23454

**FIRST RECEIVED**

**IMPORTANT: Carefully read instructions before filling out!**

**ENTRY FEE ENCLOSED**

**Choose Either Regular OR Preferred Classes**

Circle one jump height -- circle class selections -- Only one selection per class (BOTH Master & Premier allowed)

REGULAR Classes						PREFERRED Classes				
8"	12"	16"	20"	24"	24C"	4"	8"	12"	16"	20"
STD	Nov A	Nov B	Open	Ex	Master	STD	NovP	OpenP	ExP	MasterP
JWW	Nov A	Nov B	Open	Ex	Master	JWW	NovP	OpenP	ExP	MasterP
FAST	Nov A	Nov B	Open	Ex	Master	FAST	NovP	OpenP	ExP	MasterP
T2B	T2B	PREMIER ___STD ___JWW				T2B	T2BP	PREMIER-P ___STD ___JWW		

**Non-Regular Classes** International Sweepstakes \_\_\_STD \_\_\_JWW

This Dog Needs To Be Measured <input type="checkbox"/> Yes <input type="checkbox"/> No	SEX	HEIGHT AT WITHERS	CALL NAME OF DOG
BREED	VARIETY		

AKC@ NAME (INCLUDE AKC TITLES ONLY)

<input type="checkbox"/> AKC@ NO	Enter Complete Registration # below	DATE OF BIRTH
<input type="checkbox"/> ILP NO.		
<input type="checkbox"/> PAL NO.		PLACE OF BIRTH (LIST COUNTRY)
<input type="checkbox"/> FOREIGN REG. NO & COUNTRY		

BREEDER \_\_\_\_\_

SIRE \_\_\_\_\_

DAM \_\_\_\_\_

ACTUAL OWNERS \_\_\_\_\_

OWNERS ADDRESS \_\_\_\_\_  **New**

CITY, STATE ZIP + 4 \_\_\_\_\_

HANDLER \_\_\_\_\_ ENTER JR. HANDLER # if applicable

**Exhibitor or owner MUST SIGN on the signature line beneath the instructions**