

DOTC of Lynchburg
All-breed Agility Trials

April 27-29, 2018



Boonsboro Ruritan Club Property

1499 Coffee Rd., Lynchburg, VA 24503

SET-UP - Thursday, April 26th

Exhibitors may setup shade tents ringside on Thursday afternoon after the ring fences are in place and the reserved areas have been marked with orange tape (perhaps by 4 pm). If you setup before that time, you may be asked to move.

JUDGE (all classes/all days)

Dan Faulkner #81714
12417 Camdenbridge Dr., Knoxville, TN 3792

TRIAL SITE HOURS 7:00 am to 7:00 pm all days

FRIDAY – Judging starts at 10 AM
EXC/MAS FAST, Open Fast, Novice FAST in Ring 1 Followed by EXC/MAS JWW in Ring 2; followed by EXC/MAS STD in Ring 1; T2B in Ring 1
SATURDAY – Judging starts at 8:30 AM
Time 2 Beat in Ring 1 followed by EXC/MAS JWW (R2); EXC/MAS STD (R1); Open JWW (R2); Open STD (R1); Nov JWW (R2); Nov STD (R1)
SUNDAY – Judging starts at 8:30 AM
Time 2 Beat in Ring 1 followed by EXC/MAS JWW (R2); EXC/MAS STD (R1); Open JWW (R2); Open STD (R1); Nov JWW (R2); Nov STD (R1)
Judge's Briefing will start 20 minutes before start of judging. Heights will run from LOW to HIGH (4" to 24C") in all classes all days.

WALKTHRUS

For EX/MAS STD and EX/MAS JWW

4" – 16" Walk - Run

20" – 24" Walk - Run

NOTE: OPN & NOV FAST will Brief & walk together but run separately. Walk Combined OPN & NOV FAST -> Run All OPN FAST -> Run All NOV FAST.

EX/MAS FAST will walk-run by itself.

Walkthru Groups will be clearly marked on the Gate Boards

All other classes will have one walk

CHECK-IN and MEASURING

WE ARE SCHEDULED TO HAVE MULTIPLE VMOS at this trial. All dogs needing to be measured must be measured PRIOR to running by a VMO, Measurements will take place before each class. Please allow sufficient time before your dog's run to be measured.

We will not be using Armband labels at these trials. However, you will need to know your Armband number in order to do an At Trial move-up. Please bring a printed or an electronic copy of your trial confirmation so you will have your armband number with you.

MOVE-UPS

Move ups must be sent in writing (E-mail is acceptable and preferred) to the Trial Secretary for the April 27th trial no later than Monday, April 23rd at 6pm. **Day to Day Move ups will be accepted but must be submitted in person to the trial secretary no later than 15 minutes after the last run is judged for each class (STD & JWW).** Please preface all correspondence with "DOTC" in the Subject line.

ADDITIONAL SITE INFORMATION

- Indoor crating space is available in our large climate controlled building. Indoor restrooms are available. Crates and shade tents may be left overnight; however, DOTC and the Boonsboro Ruritan Club will not be responsible for any lost or damaged items left at the show site. Building will reopen at 7 AM on Saturday and Sunday.
- Wading pools with hose and spray will be available for you and your dogs
- Exhibitors are responsible for cleaning up after their dog(s) at the trial site and at the motels. Any exhibitor failing to do so may be excused without benefit of refund if the Trial Committee deems the exhibitor to be in violation of this requirement. Cleaning supplies and disposal sites will be available at various locations around the show grounds.

VOLUNTEERS

We are relying on our agility exhibitors to help us make our trial a success. Please be generous with your time and expertise. We will make sure that your duties do not interfere with your running your dog. You will get a full walk-through to plan your strategy!

The worker sign-up link is live at: <http://www.goo.gl/YK3AWg>

Exhibitors who sign up to help will receive DOTC dollars (for lunch or future entries excluding DOTC/Star City trials) and will also receive tickets for the worker raffle.

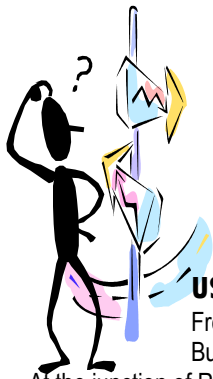
Please contact Judy Smotrel with any questions on volunteering.

Judy Smotrel: jsmotrel@jetbroadband.com

VETERINARIAN ON CALL

Animal Emergency and Critical Care

3432 Odd Fellows Rd, Lynchburg, VA 24501
434-846-1504



DIRECTIONS TO THE SITE

Boonsboro Ruritan Club Property

1499 Coffee Road, Lynchburg VA 24503

Note: In general, follow the signs to Rt 501 North!

US 460 - From the West of Lynchburg:

From 460, take the right-hand exit to 460 E Business (Timberlake Rd). Go about 3 miles.

At the junction of Rt 501, exit to the right and follow 501 North for about 2 miles to a traffic light at Rt 221. *Continue straight on Rt 501 N through the light at Rt 221. At the next light, turn left to stay on Rt 501 North, "NorthWest Expressway". At the next light at Boonsboro Rd, turn left (still 501 N) and go about 2 miles.*

Turn left onto Coffee Road (Rt 644) and go about 2 miles. The Boonsboro Ruritan Club Building is on your right.

US 460 - From the East of Lynchburg:

Exit Rt 460 at Candler's Mountain Rd (a right turn exit). Follow signs to Rt 501 North (River Ridge Mall will be on your left, and La Quinta will be on your right). Take the exit ramp to the right to Rt 501 North/Rt 29. Follow 501 N for about 3 miles to Lakeside Dr, Rt 221. See *italics above*.

US 29 - From the North of Lynchburg:

After passing the town of Amherst, stay on Route 29 South. (Do not take Business Rt. 29 South). This is the limited-access Madison Heights Bypass. After crossing the James River, Rt. 29 will join Rt. 460West. DO NOT take Rt. 501North Business at Campbell Ave.

Continue to Candler's Mountain Rd and follow signs for Rt. 501 North. (River Ridge Mall is on the left, and La Quinta Inn on the right). Take the exit ramp to the right to Rt. 501 North. Follow 501 N for about 3 miles to Lakeside Dr./Rt.221. See *italics above*.

US 29 - From the South of Lynchburg:

Follow Rt 29 North into the city limits (pass River Ridge mall entrance on your right). Take the exit ramp to the right to Rt 501 North and proceed for about 3 miles to Rt 221. See *italics above*.

For a detailed map, see our web site at WWW.DOTCLynchburg.org

FOOD – Free BBQ Buffet on Saturday at the Lunch Break

Food and drink will be available at the trial site, provided by DOTC. All exhibitors and volunteer workers on Saturday will get a free BBQ buffet for lunch. Volunteer workers on Friday and Sunday will receive DOTC Dollars that can be spent at the food concession or used as partial payment for entry fee at any future DOTC agility event, excluding DOTC/Star City combined trials in January at Lexington.

Extra lunches – Please make reservation with Judy. Pay at trial — do not send payment with entry

Laurene and Jenn Galgano
 GoneDoggin' Agility
 PO Box 3070, Virginia Beach, VA 23454
www.GoneDogginAgility.com
 E-mail: GoneDoggin@cox.net
 (757) 481-4854 (Home)
 (757) 581-1674 (Cell- for weekend of trial only)

This is a preliminary judging schedule which is contingent upon the move-up of entries that may not have been received yet.

Trial Data as of April 11, 2018

Friday, April 27								
								total runs 197
STANDARD	4"	8"	12"	16"	20"	24"	24C"	Total
EX/MAS	2	7	16	16	18	10	0	69
JUMPERS	4"	8"	12"	16"	20"	24"	24C"	Total
EX/MAS	2	5	16	17	17	11	0	68
FAST	4"	8"	12"	16"	20"	24"	24C"	Total
NOVICE	0	3	3	3	1	2	0	12
OPEN	0	0	1	3	5	1	0	10
EX/MAS	1	4	3	3	5	4	0	20
T2B	4"	8"	12"	16"	20"	24"	24C"	Total
REG & PREF	0	2	3	5	7	1	0	18

FRIDAY April 27		# of Dogs
CLASS/DIVISION	Start Time	
Briefing Ex/MAS FAST	9:40 AM	20
FAST EX/MAS Run ALL	10:00 AM	
FAST OPN/NOV Briefing /Walkthru	10:16 AM	10
FAST OPN Run ALL	10:31 AM	
FAST NOV Run ALL	10:41 AM	12
JWW Ex/MAS Briefing All Heights followed by 4" – 16" Walkthru	10:53 AM	40
JWW Ex/MAS Run 4" – 16"	11:08 AM	
JWW Ex/MAS 20" – 24" Walk	11:42 AM	28
JWW Ex/MAS 20" – 24" Run	11:57 AM	
STD Ex/MAS Briefing All Heights followed by 4" – 16" Walkthru	12:20 PM	41
STD Ex/MAS Run 4" – 16"	12:35 PM	
STD Ex/MAS 20" – 24" Walk	1:19 PM	28
STD Ex/MAS 20" – 24" Run	1:34 PM	
T2B COURSE CHANGE	2:05 PM	18
T2B BRIEFING/WALKTHRU	2:20 PM	
T2B Run ALL	2:35 PM	
END OF LAST CLASS	2:48 PM	

SATURDAY April 28		# of Dogs
CLASS/DIVISION	Start Time	
T2B Briefing followed by Walkthru	8:10 AM	36
T2B T2B	8:30 AM	
JWW Ex/MAS Briefing All Heights followed by 4" – 16" Walkthru	8:57 AM	48
JWW Ex/MAS Run 4" – 16"	9:12 AM	
JWW 20" – 24" Walk	9:52 AM	37
JWW 20" – 24" Run	10:07 AM	
STD Ex/MAS Briefing All Heights followed by 4" – 16" Walkthru	10:37 AM	50
STD Ex/MAS Run 4" – 16"	10:52 AM	
STD Ex/MAS 20" – 24" Walk	11:47 AM	36
STD 20" – 24" Run	12:02 PM	
BBQ LUNCH	12:41 PM	
JWW OPN Briefing/Walkthru	1:11 PM	20
JWW OPN Run ALL	1:26 PM	
STD OPN Briefing/Walkthru	1:46 PM	15
STD OPN Run ALL	2:01 PM	
JWW NOV Briefing/Walkthru	2:23 PM	25
JWW NOV Run ALL	2:38 PM	
STD NOV Briefing/Walkthru	3:02 PM	29
STD NOV Run ALL	3:17 PM	
END OF LAST CLASS	3:59 PM	

Saturday, April 28									total runs 296
STANDARD	4"	8"	12"	16"	20"	24"	24C"	Total	
NOVICE	0	7	4	3	9	6	0	29	
OPEN	1	1	4	3	6	0	0	15	
EX/MAS	2	9	18	21	27	9	0	86	
JUMPERS									
JUMPERS	4"	8"	12"	16"	20"	24"	24C"	Total	
NOVICE	0	5	3	3	10	4	0	25	
OPEN	1	4	6	3	4	2	0	20	
EX/MAS	2	8	17	21	27	10	0	85	
T2B									
T2B	4"	8"	12"	16"	20"	24"	24C"	Total	
REG & PREF	1	5	7	7	13	3	0	36	

Sunday, April 29									total runs 258
STANDARD	4"	8"	12"	16"	20"	24"	24C"	Total	
NOVICE	0	9	5	3	10	4	0	31	
OPEN	1	1	3	4	4	0	0	13	
EX/MAS	2	10	15	16	21	10	0	74	
JUMPERS									
JUMPERS	4"	8"	12"	16"	20"	24"	24C"	Total	
NOVICE	0	7	3	3	9	2	0	24	
OPEN	1	4	5	2	4	2	0	18	
EX/MAS	2	9	14	17	21	10	0	73	
T2B									
T2B	4"	8"	12"	16"	20"	24"	24C"	Total	
REG & PREF	1	3	6	4	7	4	0	25	

SUNDAY April 29		# of Dogs
CLASS/DIVISION	Start Time	
T2B Briefing/Walkthru	8:10 AM	25
T2B Run ALL	8:30 AM	
JWW Ex/MAS Briefing All Heights followed by 4" – 16" Walkthru	8:48 AM	42
JWW Ex/MAS Run 4" – 16"	9:03 AM	
JWW Ex/MAS 20" – 24" Walk	9:38 AM	31
JWW Ex/MAS Run 20" – 24"	9:53 AM	
STD Ex/MAS Briefing All Heights followed by 4" – 16" Walkthru	10:19 AM	43
STD Ex/MAS Run 4" – 16"	10:34 AM	
STD Ex/MAS 20" – 24" Walk	11:21 AM	31
STD Ex/MAS Run 20" – 24"	11:36 AM	
JWW OPN Briefing/Walkthru	12:09 PM	18
JWW OPN Run ALL	12:24 PM	
STD OPN Briefing/Walkthru	12:42 PM	13
STD OPN Run ALL	12:57 PM	
JWW NOV Briefing/Walkthru	1:17 PM	24
JWW NOV Run ALL	1:32 PM	
STD NOV Briefing/Walkthru	1:55 PM	31
STD NOV Run ALL	2:10 PM	
END OF LAST CLASS	2:55 PM	

Please remember that the Trial Schedules is only an Estimate

(All times are approximate)